

After Sales Service

FIELD SERVICE - COMMISSIONING - REPAIRS
SPARE PARTS - TECHNICAL SUPPORT - TRAINING



MarelliService provides a superior support for the wide range of Marelli products with an effective and professional after sales service, operating closely within the Marelli manufacturing facility.

The services available are varied and include commissioning, general, repairs, performance enhancements and maintenance contracts of electrical machines of all makes as well as customer training courses.



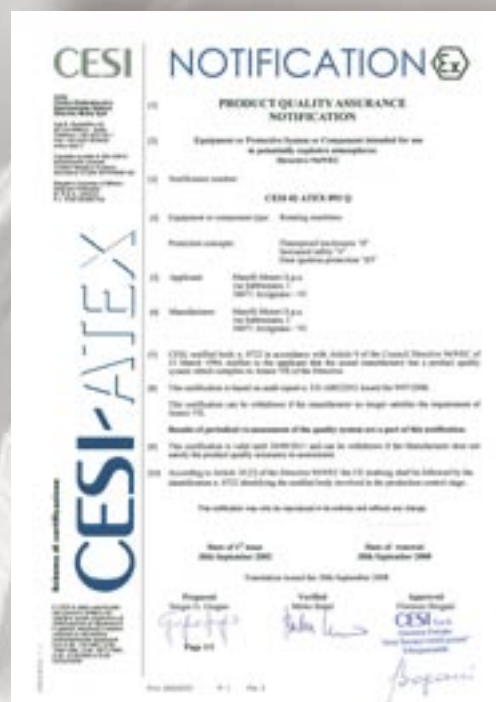
MarelliService can offer:

- professional advice
- performance improvement
- reduction in the operating costs
- greater reliability of equipment

MarelliService operates worldwide fully in compliance with the international quality rules, through skilled staff and precision instruments.

The excellence of MarelliService work stands out especially within the most essential and difficult applications, from marine to petrochemical ones, from hydroelectric to co-generation.

Got a Problem? MarelliService is Your Solution.





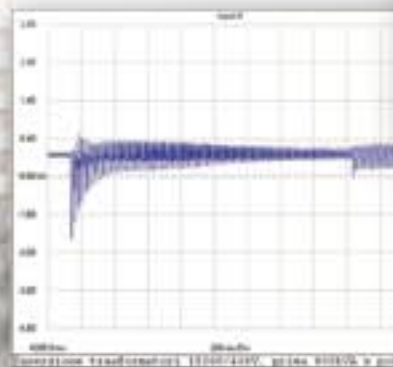
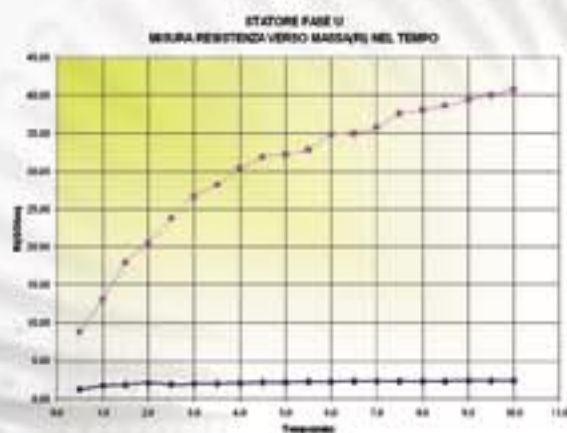
FIELD SERVICE

For a plant to operate efficiently it must avoid disruptive surprises and be able to respond immediately with corrective actions. MarelliService is the solution to electrical machine problems with prompt technical support and responsiveness through a worldwide service network.

Equipped and skilled experts, who always keep abreast of technical innovations, solve the problems through dynamism, efficacy and no compromises for:

- diagnostic and functional tests
- start-up of brand-new machines
- modernising of regulation systems
- on the spot repairs
- custom-made maintenance programmes
- periodical inspections

MarelliService is with You, Everywhere.



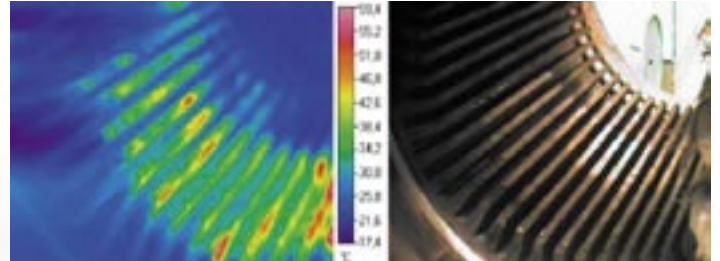
REPAIRS

MarelliService repairs Marelli and all other makes of electrical machines through accurate and tailored procedures.

Computerised machine centres, VPI plants, 3D measurement systems, digital and infrared diagnostics tools, along with the Marelli long experience in designing and manufacturing machines, offer the highest quality of repairs and absolute reliability.

A modern test room that can handle machines up to 5 MW and a 13,8 kV completes the work and assures customers of a final performance confirmed with functional test certificates and detailed repair reports.

MarelliService effects All Repairs with the Same Spirit as Marelli produces New Machines.



SERVICE PRODUCTS



Field Service

MarelliService's staff reacts promptly, everywhere in the world, right on the spot; rapidly analyses the situation and handles it, regardless of the degree of difficulty.



Commissioning

The inspections on the electrical machines and the assistance provided during the commissioning activities guarantee that the start-up takes place safely and that correct functional parameters are applied.



Repairs

The repairs of low, medium and high voltage machines can either take place both at the Marelli manufacturing facility or at the customer location.



Spare Parts

Genuine Marelli spare parts are available at the Marelli headquarters, branch offices, and service centres located all over the world.



Technical Support

The study and the carrying out of suitable solutions to improve performance, render the machines safe to operate in a reliable mode.



Training

Training courses are available all year round to users and maintenance people for the correct operation and maintenance of specific and general electrical machines.



MarelliMotori®



Marelli Motori S.p.A.

Via Sabbionara, 1 - 36071 Arzignano (VI) Italy
(T) +39 0444 479711 - (F) +39 0444 479888
www.marellimotori.com
sales@marellimotori.com



MarelliService®

(T) +39 0444 479775 - (F) +39 0444 479757
service@marellimotori.com

MarelliMotori overseas offices:

GREAT BRITAIN

Marelli UK Ltd
Meadow Lane
Loughborough
Leicester
LE 11 1NB - UK
(T) +44 1509.615518
(F) +44 1509.615514
E-Mail: uk@marellimotori.com

CENTRAL EUROPE

Marelli Central Europe GmbH
Heilswannenweg 50
31008 Elze - Germany
(T) +49 5068.462-400
(F) +49 5068.462-409
E-Mail: germany@marellimotori.com

USA

Marelli USA, Inc
1620 Danville Road
PO Box 410
Harrodsburg, KY 40330
(T) +1 859.734.2588
(F) +1 859.734.0629
E-Mail: usa@marellimotori.com

ASIA PACIFIC

Marelli Asia Pacific Sdn Bhd
Lot 7, Jalan Majistret U1/26
Hicom - Glenmarie Industrial Park
40150 Shah Alam
Selangor D.E., Malaysia
(T) +60 3.7805.3736
(F) +60 3.7803.9625
E-Mail: asiapacific@marellimotori.com

SOUTH AFRICA

Marelli Electrical Machines South Africa (Pty) Ltd
Unit 4, 55 Activia Rd Activia Park
Elandsfontein, 1406
Gauteng, Republic of South Africa
(T) +27 11.822.5566
(F) +27 11.828.8089
E-Mail: southafrica@marellimotori.com